



Elinkeino-, liikenne- ja ympäristökeskus  
Närings-, trafik- och miljöcentralen  
Centre for Economic Development, Transport and the Environment

# Sustainable Land Use of Acid Sulfate Soils

Towards Harmony between Land Use and the Environment

Pertti Sevola

7 th IASSC

Public Seminar: Stakeholders view

29.8.2012



Elinkeino-, liikenne- ja ympäristökeskus  
Närings-, trafik- och miljöcentralen  
Centre for Economic Development, Transport and the Environment

# Centre for Economic Development, Transport and the Environment: State Regional Authority

- Water Framework Directive: Good Ecological Status 2015
- Floods Control Directive
- Marine Directive
- Water Management and Water Supply
- Land Use
- Environmental Protection
- Nature Protection
- Water Quality & Hydrological Monitoring





















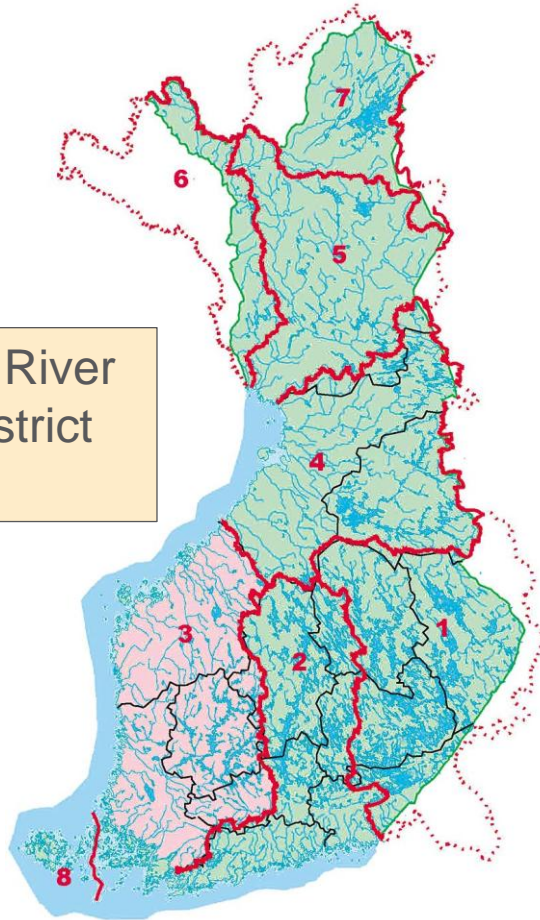


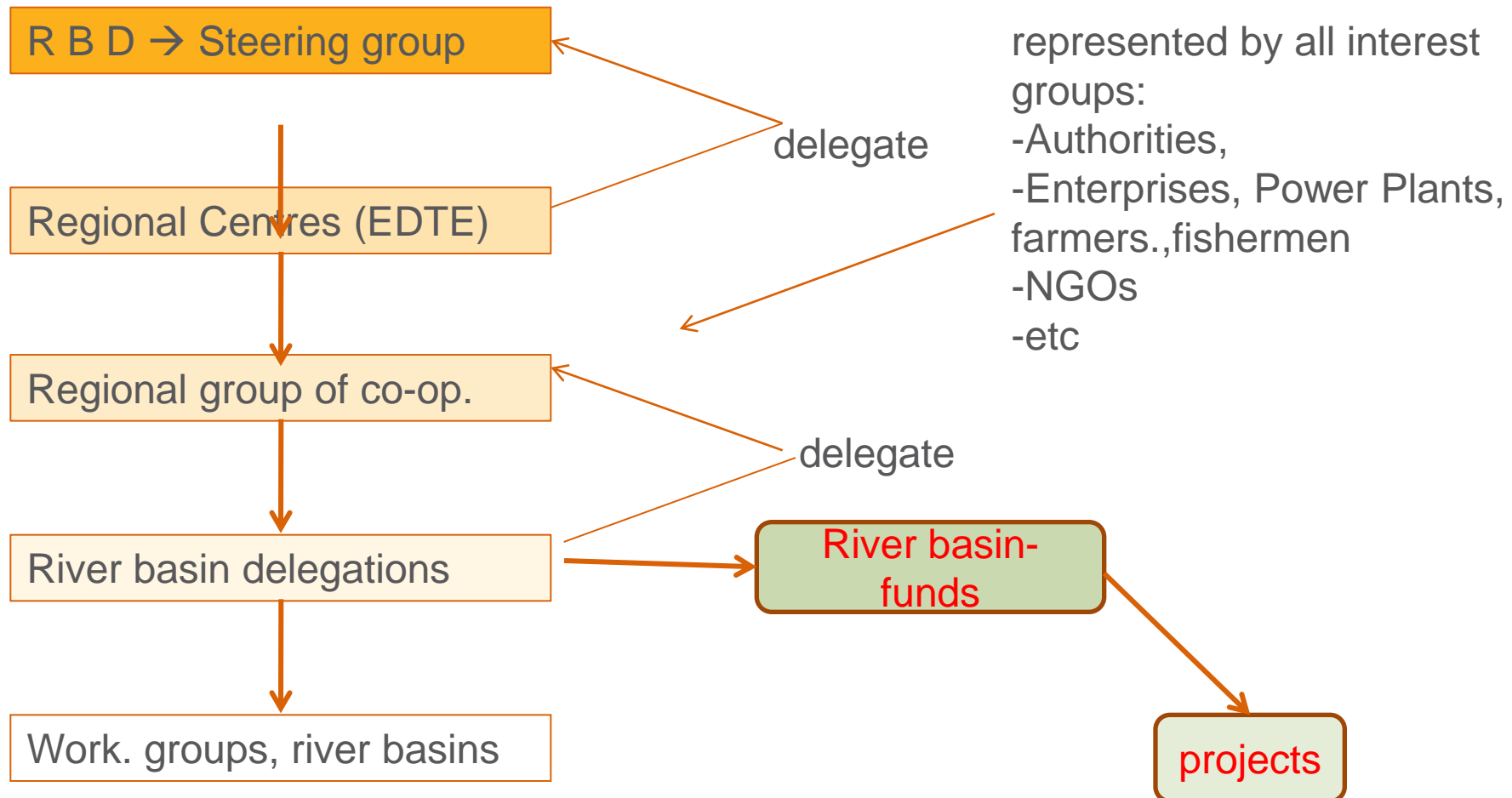


Elinkeino-, liikenne- ja ympäristökeskus  
Närings-, trafik- och miljöcentralen  
Centre for Economic Development, Transport  
and the Environment

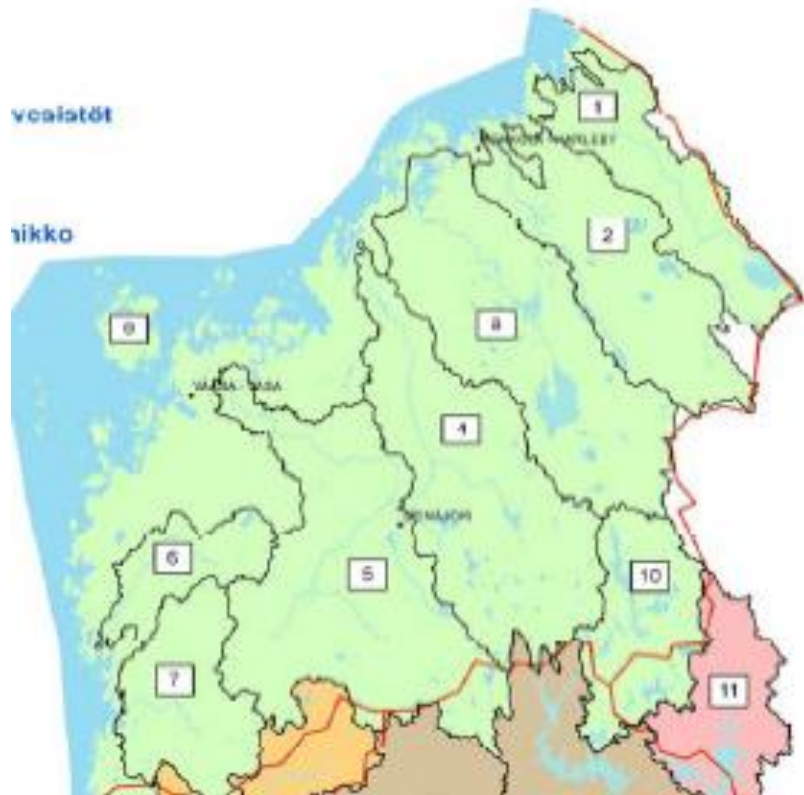


Western River  
Basin District  
(RBD)









Public – private cooperation  
-Good results  
-Networking at local/regional level

## River Basin Delegations

Thank You for Your Attention

