

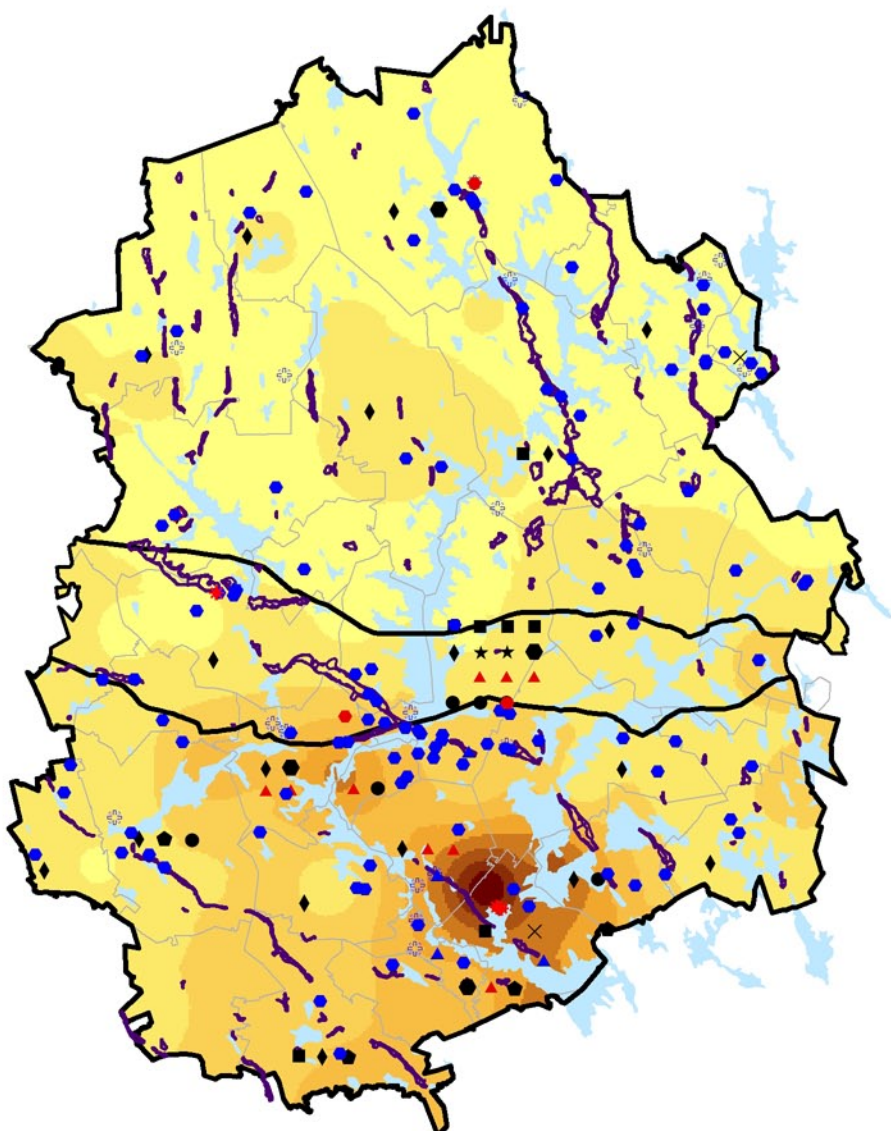


0 12.5 25 km

Central Finland
Granitoid Complex

Tampere Belt

Pirkanmaa Belt



Landfills

- ▲ landfill for soil masses, closed
- ▲ landfill for soil masses, functional
- ⊗ industrial landfill, closed
- * industrial landfill, functional
- municipal landfill, closed
- municipal landfill, functional
- groundwater areas

Waste treatment plants

- ◆ composting and windrow composting
- × waste incineration plant
- sorting and/or crushing plant
- ★ digester
- hazardous waste treatment plant
- treatment plant for contaminated soils
- transfer station

Fine fraction of Till (As_mg/kg)

<5	15 - 20	30 - 35
5 - 10	20 - 25	35 - 40
10 - 15	25 - 30	40 - 44